



Sheet Materials & Insulation



**Plywood, MDF, OSB
Water & Fire Resistant Sheets
Plasterboard, Insulation
Solid Wood Panels**



Champion stock an extensive range of sheet materials and insulation within our 10 branches across the South East. In addition we can offer sheet material cutting services at all branches, with free delivery to a wide area.



PROFESSIONAL SHEET CUTTING SPECIALISTS

With the first 2 cuts for free, our modern machines and professional tungsten tipped blades can cut to a minimal tolerance of + or - 2mm over a full board length.

EFFICIENTLY MODERN

All orders are digitally optimised to reduce waste to a minimum and ensure all pieces are cut with the grain running along or across the board as requested.



Contents

Plywood	4-6
Pre-Cut Handi-Panels	6
Medium Density Fibreboard (MDF)	7
MDF and Veneered MDF, Pre-Glued Wood Veneer	8-9
Cut to Size Service	10
Chipboard, OSB, OSB 3 and Melamine Faced Chipboard	11
Floor Protection Board - Hardboard	12
Fire Rated Sheet Material	13
Water & Fire Resistant Sheet Material	13
Plasterboard & Accessories	14-15
Insulation Products	16-22
Hybrid Insulation	21
Worktops	23
Solid Wood Panel	23

In our product descriptions we use the following abbreviations:
 Nom = Nominal size before machining. Fin = Finished size after machining.
 We reserve the right to alter profiles and specifications without notice.

E&OE. © Champion Timber August 2023



A Guide to Champion Plywood

Code used for the specification of plywood

G = Not suitable for structural use

S = Suitable for structural use

E N - 6 3 6 - 2 S

1 = Internal glued and contains non-durable timber

2 = Exterior glued but may contain non-durable timber

3 = Exterior glued and durable hardwood throughout



In addition to the Marine Grade Plywood we offer that meets the specification of BS1088, we also offer a range of compliant plywood to EN314 and EN636.

Plywood has two material components, wood and glue, EN314:1993 and EN 636:2003 are standards that work in tandem with each other with EN314 referring to bonding quality and EN636 referring to durability of wood species.

EN636 defines the specification of plywood regarding the type of glue, the durability of the timber and its suitability for structural use.

The number following the EN636 code defines the durability of timber used in manufacture of the plywood

EN636 - 1 (Class 1) Defines product that is suitable for dry interior use only

EN636 - 2 (Class 2) Defines that the product contains timber that is classed as non-durable and is suitable for use in humid areas or exposure to occasional wetting. It can be used in exterior application when fully covered or given a fully external decoration.

EN636 - 3 (Class 3) Defines that the product is made from timber that is durable (hardwood throughout) and is suitable for all exterior application including frequent wetting. Prolonged use in an external application would require boards to be covered or decorated.

The final part of EN636 deals with its suitability for structural use. All the plywood we stock of a thickness 9mm or over is suitable for structural use and is defined by the addition of the letter "S". Boards below 9mm show the letter "G" in their description and are only suitable for General use (non structural)

HARDWOOD THROUGHOUT EXTERNAL CHAMPION SUPA PLYWOOD

- Use on all applications demanding full external classification compliance
- Structural AND External performance (3.6 and 5.5mm, not structural)
- Certified to EN636-3S (3.6 and 5.5mm certified to EN636-3G) and EN314-2 class 3
- General construction, flooring, domestic or commercial roofs and joinery

Code	Description	EN specification
849HSP	2440 x 1220 x 9mm	3 S
8412HSP	2440 x 1220 x 12mm	3 S
8418HSP	2440 x 1220 x 18mm	3 S
8425HSP	2440 x 1220 x 25mm	3 S

HARDWOOD FACED MULTI PURPOSE PLYWOOD

- Quality hardwood facings with light weight poplar core
- Certified to EN636-2S (5.5mm certified to EN636-2G)
- General purpose internal for wall sheathing, construction, structural flooring etc. (except 5.5mm which is non structural)
- Can be used externally if sealed and protected from direct weathering

Code	Description	EN specification
844HWP	2440 x 1220 x 3.6mm	2 G
846HWP	2440 x 1220 x 5.5mm	2 G
8412HWP	2440 x 1220 x 12mm	2 S
8418HWP	2440 x 1220 x 18mm	2 S

MARINE PLYWOOD

- Conforms to BS1088-2003 and certified to EN636-3S (6mm certified to EN636-3G)
- Manufactured with high quality face and core durable hardwoods throughout
- Exterior phenolic resin glue to give long life in humid and wet conditions
- Suitable for marine use, but not for immersion in water

Code	Description	EN specification
846MP	2440 x 1220 x 6mm	3 G
849MP	2440 x 1220 x 9mm	3 S
8412MP	2440 x 1220 x 12mm	3 S
8418MP	2440 x 1220 x 18mm	3 S
8425MP	2440 x 1220 x 25mm	3 S

MARINE - LLOYDS APPROVED - 20 YR GUARANTEE

- Lloyds approved with a 20 year guarantee
- Conforms to BS1088-2003 and certified to EN636-3S
- Manufactured with high quality face and core biologically durable hardwoods throughout
- Exterior phenolic resin glue to give long life in humid and wet conditions
- 11 ply Marine Gaboon throughout
- Suitable for marine use, including submerged structural use

Code	Description	EN specification
8418LMP	2500 x 1220 x 18mm	3 S



All plywood edges should be sealed for protection

FREE Delivery*



*Free Delivery over a wide area, please ask for more details

BIRCH PLYWOOD

- Birch ply is made up of veneers with a quality smooth surface face ideal for high end joinery and jobs requiring a good paint finish.
- Certified to EN636-2S (6mm and below certified to EN636-2G)

Code	Description	EN specification
844BP	1220 x 2440 x 4mm	2 G
846BP	1220 x 2440 x 6mm	2 G
849BP	1220 x 2440 x 9mm	2 S
8412BP	1220 x 2440 x 12mm	2 S
8415BP	1220 x 2440 x 15mm	2 S
8418BP	1220 x 2440 x 18mm	2 S
8424BP	1220 x 2440 x 24mm	2 S

T & G PLYWOOD FLOORING

- Tongued and grooved all 4 edges
- Ideal for floors and ceilings
- BBA Approved for load bearing
- CE/CPD compliant as 'fit for purpose'
- Certified to EN636-2S



Code	Description	EN specification
8218TG4P	2400 x 600 x 18mm	2 S
8222TG4P	2400 x 600 x 22mm	2 S

OTHER PLYWOOD

Code	Description
8412PP	2440 x 1220 x 12mm WISA Hexa Grip/Smooth Birch WBP Phenol Coated Ply Hardwearing with anti slip properties or similar.
8418PP	1220 x 2440 x 18mm WISA Hexa Grip/Smooth Birch WBP Phenol Coated Ply Hardwearing with anti slip properties or similar.

Pre-Cut Handi-Panels

CUT TO SIZE HARDWOOD FACED GENERAL PURPOSE PLYWOOD

Code	Description
20742409	1220* x 610* x 5.5/6mm
20796563	2440 x 610* x 5.5/6mm
20753498	1220 x 1220* x 5.5/6mm
20781224	1220* x 610* x 12mm
20735388	2440 x 610* x 12mm
20792312	1220 x 1220* x 12mm
20743703	1220* x 610* x 18mm
20795085	1220 x 1220* x 18mm
20722340	2440 x 610* x 18mm

PRO MDF MEDIUM DENSITY FIBREBOARD

Code	Description
20734060	1220 x 610* x 6mm
20765880	1220 x 1220* x 6mm
20738181	2440 x 610* x 6mm
20774202	1220 x 610* x 12mm
20776978	1220 x 1220* x 12mm
20728366	2440 x 610* x 12mm
482418MDF	1220 x 610* x 18mm
484818MDF	1220 x 1220* x 18mm
962418MDF	2440 x 610* x 18mm

Dimensions marked * are nominal

FLEXIBLE PLYWOOD

- Moisture resistant glue
- Flexibility allows quick and easy creation of intricate curves and circular shapes
- Used in furniture making, exhibition work, shopfitting, columns and framework etc
- Certified to EN636-2G



Code	Description	EN specification
845FPC	1220 x 2440 x 5mm - Cross Grain	2 G

SOFTWOOD STRUCTURAL PLYWOOD

- Good one face structural plywood
- Conforms to EN636-2S structural use in roofing, flooring and wall sheathing



Code	Description	EN specification
849BBA	2440 x 1220 x 9mm	2 S
8412BBA	2440 x 1220 x 12mm	2 S
8418BBA	2440 x 1220 x 18mm	2 S
8424BBA	2440 x 1220 x 24mm	2 S

STRUCTURAL CDX PLYWOOD

- Cost effective for general construction
- Certified to EN636-2S

Code	Description	EN specification
8418STP	2440 x 1220 x 18mm	2 S

PRO MDF Medium Density Fibreboard

Manufactured from high quality wood fibres, dry-bonded with synthetic resins then compressed at high frequency. A very versatile panel, wide variety of uses from general construction to furniture.

- Higher density board than standard boards
- Superior screw and fastener holding compared to standard boards
- Smoother surfaces and edges for improved high quality finishing
- Ideal for paint, veneer or foils. • Ideal for edge profiling
- Easy to drill, shape and routs cleanly and easily, without splintering or chipping
- Cuts to a crisp clean smooth edge, reducing breakout
- Suitable for use with all woodworking tools

It is recommended that a suitable face mask is worn when cutting or machining, and all faces and edges are sealed with MDF sealer.



For Interior Use Only

Code	Description
842MDF	2440 x 1220 x 2/2.5mm
843MDF	2440 x 1220 x 3mm
844MDF	2440 x 1220 x 4mm
846MDF	2440 x 1220 x 6mm
849MDF	2440 x 1220 x 9mm
8412MDF	2440 x 1220 x 12mm
8415MDF	2440 x 1220 x 15mm
8418MDF	2440 x 1220 x 18mm
8422MDF	2440 x 1220 x 22mm
8425MDF	2440 x 1220 x 25mm
8430MDF	2440 x 1220 x 30mm
10512MDF	3050 x 1525 x 12mm
1046MDF	3050 x 1220 x 6mm
1049MDF	3050 x 1220 x 9mm
10412MDF	3050 x 1220 x 12mm
10415MDF	3050 x 1220 x 15mm
10418MDF	3050 x 1220 x 18mm
10425MDF	3050 x 1220 x 25mm
10430MDF	3050 x 1220 x 30mm
10518MDF	3050 x 1525 x 18mm
10525MDF	3050 x 1525 x 25mm

White Primed

Code	Description
8418MDFWP	2440 x 1220 x 18mm White Primed



White Primed Moisture Resistant MDF is white primed on one or both faces as required, ready for painting. Ideal for use in humid conditions such as kitchen and bathroom furniture, window boards, skirtings, and architraves.

PRO Moisture Resistant MDF

For use in areas of high humidity such as kitchens and bathrooms.



Code	Description
846MRMDF	2440 x 1220 x 6mm
849MRMDF	2440 x 1220 x 9mm
8412MRMDF	2440 x 1220 x 12mm
8415MRMDF	2440 x 1220 x 15mm
962418MRMD	2440 x 610 x 18mm
8418MRMDF	2440 x 1220 x 18mm
10418MRMDF	3050 x 1220 x 18mm
10518MRMDF	3050 x 1525 x 18mm
8425MRMDF	2440 x 1220 x 25mm
8430MRMDF	2440 x 1220 x 30mm

Exterior MDF - Tricoya

Exterior MDF with 50 year guarantee - a good alternative to Marine Ply
Very stable and machines like MDF

Suitable for

- Facade cladding/siding
- Fascia & Soffit panels
- Window & Door Components • Wet interiors eg wall linings & cubicle doors in changing rooms and swimming pool areas • External furniture
- Play Equipment • Signage

Code	Description
846TMDF	2440 x 1220 x 6mm
849TMDF	2440 x 1220 x 9mm
8412TMDF	2440 x 1220 x 12mm
8415TMDF	2440 x 1220 x 15mm
8418TMDF	2440 x 1220 x 18mm
10418TMDF	3050 x 1220 x 18mm

FREE Delivery*



*Free Delivery over a wide area, please ask for more details

BEAD AND BUTT MDF - PRIMED

- Grooved at 100mm centres
- Moisture resistant MDF, ready primed to save time
- factory quality machined profiles



Code	Description
849MDFCGP	1220 x 2440 x 9mm Primed - Cross Groove
849MDFLGP	2440 x 1220 x 9mm Primed - Long Groove

FLEXIBLE MDF

- create shapes, go round bends, very versatile
- uses include shopfitting, contoured wall features, bar fronts, columns, kitchen, bedroom and office furniture
- very cost effective

Code	Description
846MDFFS	Short Grain (Bend 1220mm Width) 1220 x 2440 x 6mm
846MDFFL	Long Grain (Bend 2440mm Width) 2440 x 1220 x 6mm

Melamine Faced MDF

Quality decorative veneer for use in furniture, doors, cabinet bespoke manufacture.

MELAMINE 2 SIDES

Code	Description
8418MFMDFW	2440 x 1220 x 18mm Matt White

Pre-glued Edging for above

20573010	22mm x 50m Roll	Matt White
----------	-----------------	------------

LACQUERED 1 SIDE

Code	Description
843WLMDF	2440 x 1220 x 3mm White

Veneered MDF

Quality real wood veneer for use in furniture, doors, cabinet bespoke manufacture - can be oiled, waxed or varnished.

ASH VENEERED

Code	Description
846MDFA	2440 x 1220 x 6mm - 1 side
8410MDFA	2440 x 1220 x 10mm - 2 sides
8413MDFA	2440 x 1220 x 13mm - 2 sides
8418MDFA	2440 x 1220 x 19mm - 2 sides
8426MDFA	2440 x 1220 x 26mm - 2 sides



WHITE BEECH VENEERED

Code	Description
846MDFBSS	2440 x 1220 x 6mm - 1 side
8410MDFB	2440 x 1220 x 10mm - 2 sides
8413MDFB	2440 x 1220 x 13mm - 2 sides
8418MDFB	2440 x 1220 x 19mm - 2 sides
8426MDFB	2440 x 1220 x 26mm - 2 sides



STEAMED BEECH VENEERED

Code	Description
8419MDFBS	2440 x 1220 x 19mm - 2 sides



CHERRY VENEERED

Code	Description
846MDFC	2440 x 1220 x 6mm - 1 side
8410MDFC	2440 x 1220 x 10mm - 2 sides
8413MDFC	2440 x 1220 x 13mm - 2 sides
8418MDFC	2440 x 1220 x 19mm - 2 sides



MAPLE VENEERED

Code	Description
846MDFM	2440 x 1220 x 6mm - 1 side
8410MDFM	2440 x 1220 x 10mm - 2 sides
8413MDFM	2440 x 1220 x 13mm - 2 sides
8418MDFM	2440 x 1220 x 19mm - 2 sides



PINE VENEERED

Code	Description
846MDFPSS	2440 x 1220 x 6mm - 1 side
8410MDFP	2440 x 1220 x 10mm - 2 sides
8413MDFP	2440 x 1220 x 13mm - 2 sides
8418MDFP	2440 x 1220 x 19mm - 2 sides



OAK VENEERED

Code	Description
844MDFO	2440 x 1220 x 4mm - 1 side
846MDFO	2440 x 1220 x 6mm - 1 side
8410MDFO	2440 x 1220 x 10mm - 2 sides
8413MDFO	2440 x 1220 x 13mm - 2 sides
8418MDFO	2440 x 1220 x 19mm - 2 sides
10418MDFO	3050 x 1220 x 19mm - 2 sides
8426MDFO	2440 x 1220 x 26mm - 2 sides



CROWN CUT SAPELE VENEERED

Code	Description
846MDFS	2440 x 1220 x 6mm - 1 side
8410MDFS	2440 x 1220 x 10mm - 2 sides
8413MDFS	2440 x 1220 x 13mm - 2 sides
8418MDFS	2440 x 1220 x 19mm - 2 sides



BLACK AMERICAN WALNUT VENEERED

Code	Description
846MDFWB	2440 x 1220 x 6mm - 1 side
8413MDFWB	2440 x 1220 x 13mm - 2 sides
8419MDFWB	2440 x 1220 x 19mm - 2 sides
8426MDFWB	2440 x 1220 x 26mm - 2 sides



EDGING - 50m ROLLS - REAL WOOD PRE-GLUED

Code	Description
20550301	19mm/22mm Sapele
20598921	19mm/22mm Oak
20538361	30mm White Oak
20580926	19mm/22mm Walnut

Pre-Glued Wood Veneer

Iron-on self-adhesive wood veneers. Unfinished to stain or varnish.

Code	Description
22362056	2500 x 300mm American Walnut Type Wood Veneer
22366078	2500 x 300mm Sapele Type Wood Veneer
22371621	2500 x 300mm White Oak Type Wood Veneer



Unrivalled range

A massive range of timber always in stock and the largest range of timber mouldings in the South East.

Unrivalled quality

Premium quality redwood used for PAR and mouldings. Machining service available to our exacting standards.

Unrivalled service

Free delivery service (conditions apply). Excellent customer service through investment in staff training.

FREE Delivery*



*Free Delivery over a wide area, please ask for more details



Cut to Size Service

- We can cut accurately to your sizes
- We ensure our blades and machines are checked and serviced regularly to ensure the best dimensional accuracy and squareness
- We use specialist saw blades to ensure all edges are crisp and true with minimal breakout
- We use a Digital cultist optimiser to reduce waste, to save you money on site
- We offer prompt, professional service at all branches
- We double check our finished cuts for quality before they leave the mill

Please call us with your requirements

Chipboard Flooring

FLOORING GRADE T&G TYPE P5 MOISTURE RESISTANT

Tongued and grooved all four edges.

Moisture Resistant - particularly suited in areas where risk of moisture and humidity. Not for external use.

- Ideal for kitchens, bathrooms and extensions

Code	Description
8218MRTGC	2400 x 600 x 18mm
8222MRTGC	2400 x 600 x 22mm

EGGER PROTECT TG4 MR (P5)

Egger protect is a laying system designed primarily to reduce installation times and also minimise squeaking floors, whilst complying with current HSE regulations for floor decking.



By eliminating the use of nails the strength of the board is increased, whilst squeaks associated with mechanical fixings are minimised.

The boards also reduce weather-related stoppages as it is to be laid in light rain conditions. Furthermore, sealing the tongue and groove with EGGER D4 Adhesive negates the need for joint tape

- LIFETIME WARRANTY IF USED WITH EGGER ADHESIVE
- Save time and labour costs. No taping, quick and easy to lay
- No need for tools/applicators • Reduction in time-consuming nailing
- Can be used for installation during light rain conditions
- Up to five times stronger than a nailed fixing
- Can be left exposed to the elements for 42 days once laid

Code	Description
8222MREP	2400 x 600 x 22mm

SMARTPLY SITE PROTECT OSB

Pre-primed with a heavy-duty polymer.

No more wet weather delays, dust or issues with wet paint. No use of solvent-based products on site. Consistent colour coating because the board is spray painted. No need for barriers preventing the general public from making contact with wet paint.



Applications: Hoarding, Site protection, Security installations

Code	Description
84180SBSSP	2440 x 1220 x 18mm Pre-primed

OSB 3 Structural

EXTERIOR OSB 3 STRUCTURAL

A general purpose board suitable for exterior use composed of timber wafers/strands of variable species and bonded under pressure with waterproof resin. Made up with cross oriented strands to give maximum strength.

- Specified for flat roofs, flooring and wall sheathing
- Cheaper alternative to Ply
- CE/CPD compliant as 'fit for purpose'



Code	Description
84110SB	2440 x 1220 x 11mm
84180SB	2440 x 1220 x 18mm
82180SB3TG4	2400 x 625 x 18mm Exterior Tongue & Groove 4 Edges

Melamine Faced Chipboard Lipped two long edges

Chipboard core used is super smooth 3 layer construction.

- Surface finish ensures no chips are 'grinning' through the surface
- Boards are bonded for life
- Melamine used is classed as durable
- All sheets 2440mm long, 15-16mm thickness

WHITE MELAMINE FACED

Code	Description
20574918	2440 x 152mm
20572136	2440 x 228mm
20520748	2440 x 305mm
20569365	2440 x 381mm
20545260	2440 x 457mm
20566593	2440 x 531mm
20563820	2440 x 610mm

Iron-on Edging Strip

Code	Description	
20575267	19mm White Melamine	10m roll
20573010	22mm Matt White	50m roll

Protection Board

Boards for protecting floors, doors or windows whilst wet trades etc are on site.

Code	Description
842PBBP	2440 x 1220 x 2mm Plain Black Protector Board
24757737	2440 x 1220 x 2mm Translucent White Protector Board
24715799	1200 x 600 Antinox Protector Board (10 Pack)
21576065	1m x 50m Roll Card Floor Protection Proguard PRC55
21571121	600mm x 50m Roll Blue Window Protection Film Proguard PFW21B

Hardboard

STANDARD

A dense, highly compressed wood fibre sheet material, very smooth on one side with a mesh pattern on the reverse.

Code	Description
42H	1220 x 610 x 3.2mm
84H	2440 x 1220 x 3.2mm



Fire Rated and Water Resistant Sheet Material

Fire Rated Sheet Material

VERSALINER, MAGPLY OR SIMILAR

A cement bonded particle board.

- Ideal for use with partition Walls for Fire and Acoustic Performance, Acoustic Floors, Roof and Ceilings, Sheathing Panel for Steel Frame Systems, Sheathing Panel for External Wall Insulation
- asbestos free, no hazardous volatiles, non-aggressive dust
- cut, plane, drill, router or screw into it
- rated as Class 'O'

Code	Description
846PROC	2440 x 1220 x 6mm

FIRE RESISTANT MDF

MDF Fire Resistant board is manufactured to Euro Class B as set out under building regulations, for specific use in situations where the risk of fire may be present.

Euro Class B flame retardant MDF is not suitable for external or structural applications or where exposure to water or high relative humidity may be encountered.

Euro Class B flame retardant MDF is suitable for use in internal dry conditions only.

Common uses include display panels, wall linings and partitions.

Code	Description
8412MDFFR0	2440 x 1220 x 12mm
8418MDFFR0	2440 x 1220 x 18mm

Water and Fire Resistant Sheet Material

HARDIBACKER OR SIMILAR

Made from Portland cement and ground sand with cellulose additives, this board is particularly resistant to water and as such is used in bathrooms, kitchens and utility rooms.

Ideal as a backing board for tiling etc. Generally Hardibacker 250 is used for floor and worktop applications, whilst Hardibacker 500 is used for walls, although the latter can also be used for floors and worktops.

- highly recommended where high levels of moisture exist
- non-combustible, conforms to Class 'O' Surface Spread of Flame
- vermin and rot proof
- strong and durable, yet light and easy to work with (wear mask)
- bonding coat on surface assists tiling
- meets ISO 8226
- British Board of Agreement (BBA) approved
- 10 year product warranty
- asbestos and formaldehyde free
- suitable for internal and external use

Code	Description
536HB	1500 x 900 x 6mm Hardibacker 250
4312HB	1200 x 800 x 12mm Hardibacker 500

KNAUF AQUAPANEL CEMENT TILE BACKERBOARD

Knauf AQUAPANEL® Cement Board Indoor is a tough, impact-resistant glass-fibre-reinforced cement tile backer for use in wet and humid areas. Strong and impact resistant

No priming is required before applying tiles making AQUAPANEL® the ideal tile backer. Resistant to mould and mildew ideal for bathrooms, wet rooms, kitchens and areas of high humidity. Can be bent to a 1m radius, at full board size, for curved walls and ceilings



Code	Description
4312AICB	1200 x 900 x 12.5mm
8312AICB	2440 x 900 x 12.5mm



FREE Delivery*



*Conditions apply, please ask for more details

www.championtimber.com
 Try our great TRADE WEBSITE - with many benefits for trade customers such as:



You can see **YOUR** trade prices, so you can quote any projects accurately



Place orders at **YOUR** trade prices 24/7



Track orders including historical orders for your reference

Plasterboard

PLASTERBOARD

A wallboard consisting of aerated gypsum encased in a strong durable paper liner.

- used for partitioning, internal wall and ceiling linings
- Ivory face suitable for both plastering and direct decoration
- because of its unique behaviour when subject to high temperatures, classified Class 'O' Spread of Flame in England and Wales
- all Plasterboard products are CE/CPD compliant as 'fit for purpose'

SQUARE EDGE

Code	Description
639SEP	1800 x 900 x 9.5mm
6312SEP	1800 x 900 x 12.5mm
849SEP	2400 x 1200 x 9.5mm
8412SEP	2400 x 1200 x 12.5mm
8415SEP	2400 x 1200 x 15mm

Other sizes available to order.

TAPERED EDGE

Tapered edge version, used when 'Dry Lining' a wall or partition. Once the correct joint treatment has been completed, provides a flat seamless surface, without the need for plastering.

Code	Description
8412TEP	2400 x 1200 x 12.5 mm

Other sizes available to order.

KNAUF PERFORMANCE PLUS PLASTERBOARD

Knauf Performance Plus is the highest-specification plasterboard in the Knauf range.

- High-density core with added performance-enhancing ingredients
- High levels of sound, moisture, fire and impact resistance

Code	Description
8412PPPSE	2400 x 1200 x 12.5mm Performance Plus Plasterboard S/E
8415PPPSE	2400 x 1200 x 15mm Performance Plus Plasterboard S/E

FOIL BACKED VAPOUR CHECK

A tough, scuff resistant metallised polyester film on one face of the plaster-board provides the dual features of vapour check and reflective thermal insulation.

Available in square or tapered edge. Used to line ceilings, external walls and loft conversions etc.

Code	Description
6312DP	1800 x 900 x 12.5mm Square Edge
8412DP	2400 x 1200 x 12.5mm Tapered Edge

Other sizes available to order.

SOUNDSHIELD PLUS PLASTERBOARD

The high density of this board helps absorb sound energy

- designed for use where sound reduction is particularly important
- classified as Class 'O' Surface Spread of Flame
- complies with BS1230 Part 1, designated as Type 1
- CE/CPD compliant as 'fit for purpose'

Code	Description
8413SSPB	2400 x 1200 x 12.5mm Tapered Edge
8415SSPB	2400 x 1200 x 15mm Tapered Edge

THERMAL LAMINATE

Consists of 12.5mm plasterboard backed with a thick layer of extruded polystyrene to form a versatile board with high thermal insulation value.

- allows thinner thicknesses to be used compared to standard
- extruded polystyrene provides a natural vapour barrier

Code	Description
8422TLPB	2400 x 1200 x 22mm Tapered Edge
8430VCTL	2400 x 1200 x 30mm Tapered Edge
8440VCTL	2400 x 1200 x 40mm Tapered Edge

THERMAL LAMINATE PLUS BOARD

Knauf Thermal Laminate Plus is a 9.5mm wallboard bonded to extruded polystyrene.

- Enhanced thermal performance at a reduced thickness
- Ideal for any new build or refurbishment project.

Code	Description
8427TLPPB	2400 x 1200 x 27mm Thermal Laminate Plus Board
8435TLPPB	2400 x 1200 x 35mm Thermal Laminate Plus Board
8440TLPPB	2400 x 1200 x 40mm Thermal Laminate Plus Board
8445TLPPB	2400 x 1200 x 45mm Thermal Laminate Plus Board
8455TLPPB	2400 x 1200 x 55mm Thermal Laminate Plus Board

INSULATED PLASTERBOARD

High performance thermal insulation board where the PIR insulation is bonded to 12.5mm tapered edge plasterboard.

- Install both the insulation and the plasterboard in one operation, thus reducing installation times
- Suitable for both new build and refurbishment projects

Code	Description
8437PLTB	2400 x 1200 x 37.5mm Celotex PL3025 Thermal Board
8452PLTB	2400 x 1200 x 52.5mm Celotex PL3050 Thermal Board
8462PLTB	2400 x 1200 x 62.5mm Celotex PL3050 Thermal Board
8472PLTB	2400 x 1200 x 72.5mm Celotex PL3060 Thermal Board

MOISTURE RESISTANT PLASTERBOARD (MOISTURE SHIELD)

Suitable for applications where temporary exposure to moisture may occur.

- suitable for use in bathrooms, kitchens, garages etc
- can be used as a baseboard for ceramic tiling

Code	Description
8412MRTEP	2400 x 1200 x 12.5mm Tapered Edge
8415MRTEP	2400 x 1200 x 15mm Tapered Edge

Moistureshield boards should be sealed prior to plastering. (See manufacturers recommendation before plastering).

FIRECHECK PLASTERBOARD (FIRESHIELD)

Offers a greater fire protection than standard Wallboard.

- meets BS1230 Part 1, Type 5

Code	Description
6312FPSE	1800 x 900 x 12.5mm Square Edge
8412FCP	2400 x 1200 x 12.5mm Square Edge
8415FCP	2400 x 1200 x 15mm Square Edge

Other sizes, tapered edge and vapour check versions also available. Prices on application. Other technical details also on application.

DRYWALL SCREWS

Plated self-tapping screws for fixing plasterboard to either timber or metal stud.

Boxed screws code

Size	1000's	200's
3.5 x 25mm	23778948	23729582
3.5 x 32mm	23727557	23764378
3.5 x 38mm	23776173	23745797
3.5 x 42mm	23724785	23737822
3.5 x 50mm	23770621	23769915
Size	500's	200's
3.5 x 60mm	23740792	23721302
4.2 x 65mm	23765085	23725140
4.2 x 75mm	n/a	23784457
4.8 x 100mm	n/a	23731103

Code	Description
23783921	Collated Black Drywall Screws 35mm SEN39A35MP Box of 1000
23764774	Collated Black Drywall Screws 45mm SEN39A45MP Box of 1000
23763548	Collated Black Drywall Screws 55mm SEN39A55MP Box of 1000
23750241	Timco 3.5 x 25mm Self Drilling Drywall Screws BZP (Box 1000)
23713444	Timco 3.5 x 32mm Self Drilling Drywall Screws BZP (Box 1000)
23721326	Timco 3.5 x 38mm Self Drilling Drywall Screws BZP (Box 1000)
23791312	Timco 3.5 x 42mm Self Drilling Drywall Screws BZP (Box 1000)
23735712	Timco 3.5 x 50mm Self Drilling Drywall Screws BZP (Box 1000)
23707191	Timco 3.5 x 65mm Self Drilling Drywall Screws BZP (Box 500)
23784215	Timco 3.5 x 75mm Self Drilling Drywall Screws BZP (Box 500)
23703285	Timco 3.5 x 100mm Self Drilling Drywall Screws BZP (Box 500)

DRYWALL ADHESIVE

Code	Description
22978707	Pinkgrip Dry Fix Applicator Gun
20190934	Pinkgrip Dry Fix Plasterboard Foam Adhesive 750ml

FIBRE JOINTING TAPE (SELF ADHESIVE)

Covers over joints between boards and when used with jointing compound, dramatically reducing cracking at joints. Can also be used for internal corners.

Code	Description
23476813	Plasterboard Scrim Fibre Tape (90m Roll)
20984212	Plasterboard Scrim Fibre Tape Strong Heavy Duty Orange (90m Roll)

PLASTER/PLASTERBOARD BEADS AND TAPES

Code	Description
22042941	Plaster Mini-Mesh Bead - 2.4m long
22094339	Plaster Angle Bead - 2.4m long
22045713	Plasterboard Thin Coat Bead - 2.4m long
23419698	Plasterboard Thin Coat Angle Bead 3.0m

PLASTERBOARD ADHESIVE (BONDING COMPOUND)

Use for direct bonding of Plasterboard and Insulating Laminates

Should not be used for moisture resistant or vapourcheck boards.

Code	Description
BC	25kg bags

BONDING PLASTER

A versatile undercoat plaster that can be used on a variety of backgrounds. Bonding Coat is an ideal base coat plaster for smooth or low suction backgrounds such as tiling, concrete and plasterboard. The fine mix allows for improved workability, making it easier to spread, rule and darby.

Code	Description
23490680	25kg Thistle Bonding Plaster

MULTIFINISH PLASTER

To provide a plaster skim finish on most common backgrounds including undercoat plasters and plasterboard. Suitable for application by hand or mechanical plastering machines to finish most common backgrounds including undercoat plasters and plasterboard as well as smooth concrete. Coverage based on 2mm thickness. This versatile final coat plaster provides good results on most suction backgrounds. Its flexibility also makes it an ideal choice for small repair jobs and patching.

Code	Description
23442061	25kg Thistle Multi Finish Plaster



ROCKWOOL

Re-engineering rock for over 80 YEARS, ROCKWOOL is a committed innovator and a market leader for stone wool insulation.

ROCKWOOL stone wool insulation delivers long-term, proven performance for thermal, acoustic and fire-resistant applications.



ROCKWOOL FLEXI SLAB

ROCKWOOL FLEXI® is a multi-use, dual purpose thermal and acoustic insulation product with a unique flexible edge along one side. The patented flexible edge ensures a perfect fit is maintained between the product and its supporting framework for easy installation and optimum effectiveness.

Features:

- Unique flexible edge on one side
- Manufactured with patented flexible edge
- Ensures a perfect fit between insulation and framework
- Can be fitted between fresh timber – adaptable to timber drying out and shrinking back.
- Excellent thermal insulation
- Acoustic insulation
- A1 classified non-combustible fire resistance.
- Easy to install

Code	Description
50RWFS	Rockwool 50mm Flexi Slab 1200 x 600mm (Pack of 12) 8.64m ²
70RWFS3	Rockwool 70mm Flexi Slab 1200 x 600mm (Pack of 8) 5.76m ²
100RWFS	Rockwool 100mm Flexi Slab 1200 x 600mm (Pack of 6) 4.32m ²
180RWFS	Rockwool 180mm Flexi Slab 1200 x 600mm (Pack of 3) 2.16m ²



ROCKWOOL RWA45 INSULATION

Rockwool RWA45 50mm is a semi-rigid, flexible, resin Bonded rock mineral wool slab used for thermal, acoustic and fire insulation in general building applications, certified to EN 13162.

Rockwool RW semi-rigid and rigid slabs are high-quality resin bonded slabs that can be used for thermal and acoustic insulation in general building applications. The slabs are available in a wide range of thicknesses and densities to suit most requirements and are CE marked to EN 13162.

The Rockwool RW Slab range is used for thermal, acoustic and fire insulation in general building applications certified to EN 13162. The product range consists of high-quality resin bonded slabs in a variety of thicknesses and densities.

Insulation Products

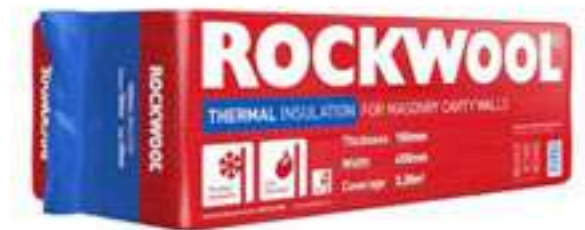


ROCKWOOL RWA45 INSULATION

Features:

- Water repellent
- Cost-effective
- Excellent thermal, acoustic and fire insulation
- Resists high temperatures
- No maintenance

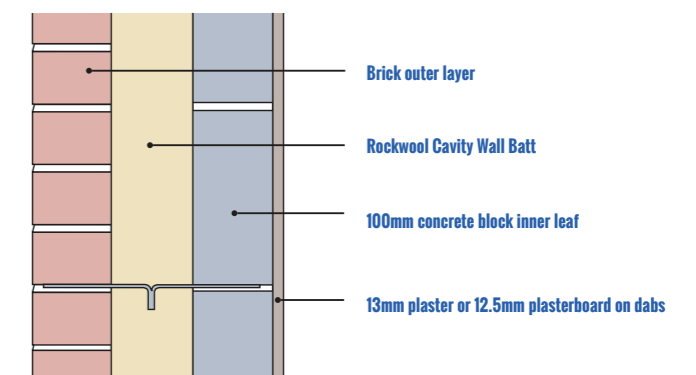
Code	Description
75RWA	Rockwool RWA45 Insulation (6 Slabs 1200 x 600 x 75mm) 4.32m ²
RWA45	1200mm x 600mm x 50mm Rockwool RWA45 Insulation 9 Slabs
RWA45100	1200mm x 600mm x 100mm Rockwool RWA45 Insulation 4 Slabs



ROCKWOOL FULL FILL CAVITY WALL BATTS

ROCKWOOL® Cavity insulation is a full-fill insulation solution for masonry cavity wall construction, suitable for use in new builds and extensions. Lightweight and easy to handle, the batts are simple to install and provide a close fit against brick and clockwork.

ROCKWOOL Cavity full-fill insulation batts are non-combustible and contain water-repellent additives which prevent moisture transmission between the outer and inner leaf.



Code	Description
50CWB	1200 x 455 x 50mm Cavity Wall Batts (12/slabs)
75RFFCWB	Rockwool Full Fill Wall Batts (9/slabs 1200 x 455 x 75mm) 4.91m ²
80RFFCWB	Rockwool Full Fill Wall Batts (8/slabs 1200 x 455 x 80mm) 4.37m ²
100RB	Rockwool 100mm Rollbatts 1/4.8m x 1200mm Split 3/400mm or 2/600mm
150TP3	Rockwool 150mm Rollbatts 1/3.65m x 1200mm Split 3/400mm
100RFFCWB	Rockwool Full Fill Cavity Wall Batts (6/slabs 1200 x 455 x 100mm) 3.28m ²

Colours may differ slightly from those shown in the brochure, owing to the limitations of the printing process.



Intelligent Environments **Superglass**

Superglass is a cost effective alternative to well known brands such as Knauf and Rockwool. The range features mineral wool products suitable for thermal and/or acoustic insulation in wall, floor, loft and partition applications.



SUPERGLASS LOFT ROLL 44

100mm Superglass Multi-Roll 44 is lightweight, non-combustible glass mineral wool insulation roll. The flexible roll is perforated to allow easy installation between common joist spacings and minimum onsite cutting and waste. Superglass Multi-Roll 44 is primarily used as thermal insulation in new and existing lofts/cold roofs. However, it can be used in a number of other applications including suspended timber ground floors. When used in the loft/cold roof it can be installed between and over the joists.

Features:
Provides excellent thermal performance with a thermal conductivity of 0.044W/mK.
Classified as A1 non-combustible (the highest possible rating).
Manufactured from up to 84% recycled glass.
BRE Green Guide Rating of A+ and ISO 14001 accredited.

Code	Description
21364778	100mm Superglass Loft Roll 44 (12.12m ²)
21379406	150mm Superglass Loft Roll 44 (7.714m ²)
21386541	170mm Superglass Loft Roll 44 (6.73m ²)
21367595	200mm Superglass Loft Roll 44 (5.626m ²)



SUPERGLASS ACOUSTIC PARTITION ROLL

Superglass Acoustic Partition Roll is a glass mineral wool insulation, ideal for metal and timber stud partitions, internal walls and drylining systems.

Features:
Superior sound absorption
A1 non-combustible performance classification
Contains up to 84% recycled materials
BRE Green Guide rating of A+
ISO 14001 accredited



Code	Description
21376948	Superglass Acoustic Partition Roll (27m ²) 25mm
21397066	Superglass Acoustic Partition Roll (15.6m ²) 50mm
21322853	Superglass Acoustic Partition Roll (12.12m ²) 100mm
10032CWB	100mm Superglass 32 Wall Batt 6 Slab 1200 x 455mm (3.276m ²)
10036CWB	100mm Superglass 32 Wall Batt 8 Slab 1200 x 455mm (4.37m ²)

SUPERGLASS 32 CAVITY WALL BATT

Superglass Superwall 32 is a British Board of Agrément (BBA) non-combustible glass wool insulation product for use in masonry cavity walls.

Superglass Superwall 32 is designed to provide thermal insulation in full-fill or partial-fill external masonry cavity walls up to 25m in height for full-fill and with no height restriction in partial-fill (additional requirements apply for buildings above 12 metres in height for full-fill and above 25 metres in height for partial-fill).



Code	Description
10032CWB	100mm Superglass 32 Wall Batt 6 Slab 1200 x 455mm (3.276m ²)
10036CWB	100mm Superglass 32 Wall Batt 8 Slab 1200 x 455mm (4.37m ²)



POLYSTYRENE

Polystyrene insulation is a type of rigid foam insulation which is commonly used in residential and commercial settings. It has an exceptional ability to insulate against noise and extreme temperatures. It is also waterproof and long-lasting. These qualities combine to make polystyrene insulation an exceptionally useful product.

POLYSTYRENE

Code	Description
25POLY	2400 x 1200 x 25mm Polystyrene EPS70 Grade
50POLY	2400 x 1200 x 50mm Polystyrene EPS70 Grade
8475POLY	2400 x 1200 x 75mm Polystyrene EPS70 Grade
100POLY	2400 x 1200 x 100mm Polystyrene EPS70 Grade



With 40 years of experience in the insulation industry Knauf are leading the change in smarter insulation solutions for a better world. One of the fastest growing and most respected names in insulation worldwide, Knauf are committed to helping their customers to meet the increasing demand for energy efficiency and sustainability in buildings.



KNAUF ACOUSTIC PARTITION ROLL

Knauf Acoustic Roll is a Glass Mineral Wool roll, designed for use in internal wall and floor applications, to offer sound absorption and noise reduction properties. It is non-combustible with the best possible Euroclass A1 reaction to fire classification and is manufactured using Knauf Insulation's unique bio-based binder, ECOSE® Technology.

Features:

- Proven test results with all major brands of plasterboard to provide assured compliance with sound related building regulations.
- Manufactured density in excess of 10kg/m³ meeting the requirements outlined within relevant sound related building regulations.
- Rolls are designed to fit between studs to close joints, reducing the potential for unwanted gaps and ensuring high levels of sound insulation.
- Long roll lengths that are ready-cut allow for quick and easy installation.

Code	Description
21388446	25mm Knauf Acoustic Partition Roll (26.64m ²)
21342110	50mm Knauf Acoustic Partition Roll (16.2m ²)
21303838	75mm Knauf Acoustic Partition Roll (17.4m ²)
21351105	100mm Knauf Acoustic Partition Roll (12.36m ²)



KNAUF DRITHERN 32 CAVITY SLAB

Knauf DriTherm® 32 Cavity Slabs are water-repellent Glass Mineral Wool slabs, designed for use in external full-fill masonry cavity walls, offering a range of thermal performance to suit construction requirements.

They are non-combustible with the best possible Euroclass A1 reaction to fire classification and are manufactured using Knauf Insulation's unique bio-based binder, ECOSE® Technology.

Cavity barriers are not required with non-combustible full fill insulation, minimising the risk of fire spreading through a cavity.

Water repellent and BBA certified for use in all exposure zones, including those in very severe areas.

Slabs are sized to fit between wall ties without the need for retaining discs.

Code	Description
7532CS	75mm Knauf DriThern 32 Cavity Slab 3.28m ²
8532CS	85mm Knauf DriThern 32 Cavity Slab 2.73m ²
10032CS	100mm Knauf DriThern 32 Cavity Slab 3.28m ²
12532CS	125mm Knauf DriThern 32 Cavity Slab 2.18m ²
15032CS	150mm Knauf DriThern 32 Cavity Slab 2.18m ²
7537CS	75mm Knauf DriThern 37 Cavity Slab 4.37m ²
8537CS	85mm Knauf DriThern 37 Cavity Slab 2.73m ²
10037CS	100mm Knauf DriThern 37 Cavity Slab 6.55m ²
15037CS	150mm Knauf DriThern 37 Cavity Slab 4.37m ²

GLASS FIBRE INSULATION ROLLS

Manufactured from glass fibre bonded with a synthetic resin:

- classed as non-combustible, achieving Class 1 Surface Spread of Flame
- rot and vermin proof
- lightweight, easy to use and maintenance free
- ideal for thermal insulation of roofs, walls and suspended floors
- because of its fire resistance and sound absorption qualities, used for suspended ceilings and lining internal partitioning

Code	Description
100CGLR14	100mm Knauf Earthwool Glass Loft Roll 3/12.18m x 380mm (13.89m ²)

Hybrid Insulation

Actis Hybris is an insulation material for timber frame or masonry walls, pitched roofs or ceilings applications.

Fully certified reflective insulation product based on a honeycomb structure. Its high thermal performance is provided by a special structure composed of a large number of low emissivity cavities, protected from dust and excessive air movement. Moreover, the low emissivity external films provide additional thermal resistance, when associated with air cavities.

- Low core effective declared thermal conductivity as low as 0.033 W/m.K (according to EN 16012).
- With an air gap on either side, HYBRIS can reach on average a complementary thermal resistance which can be incorporated into U value calculations carried out in accordance with EN 6946.
- 100mm PIR board is equivalent to 125mm of Hybris.
- Tested to EN16012 and ISO6946.
- LABC and LABSS approved.
- BM Trada Q-Mark certified.



PIR Boards (Celotex or similar)

A multi-purpose insulation board made up of rigid polyisocyanurate (PIR) modified polyurethane foam blended with hydrocarbon blowing agents yielding a board with zero Ozone Depletion Potential. The foam is faced with reflective foil both sides as a vapour barrier.

- easily cut with a knife or saw
- lightweight adding no load to the structure
- has nearly twice the thermal efficiency compared to normal insulation, therefore space saving
- stable, strong, durable and rot proof
- achieves Class 1 Surface Spread of Flame
- manufacturing process complies with legislation to reduce Global Warming
- sheet size 2400 x 1200 (nom.) mm



Applications include:

- loft conversions
- pitched roof in between and under rafters
- lining of timber frame and masonry walls
- floor insulation

Code	Thickness
8425TR	25mm Nom.
8440TR	40mm Nom.
8450TR	50mm Nom.
8460TR	60mm Nom.
8470TR	70mm Nom.
8475TR	75mm Nom.
8480TR	80mm Nom.
8490TR	90mm Nom.
84100TR	100mm Nom.
84120TR	120mm Nom.
84130TR	130mm Nom.
84140TR	140mm Nom.
84150TR	150mm Nom.
T&G PIR	
90RECFE	Eurowall- T&G PIR 1200 x 460 x 90mm (10 Pack) 5.52m².

SELF ADHESIVE ALUMINIUM FOIL TAPE

For covering butt joints on Celotex, Tri-Iso, Superquilt and Framefoil

Code	Description
20193065	75mm wide x 45m long
20134693	100mm wide x 45m long

LIGHTWEIGHT MULTI-COMPOSITE INSULATION



- ensures the continuous insulation, weather and airtightness of roofs and ridges
- across-rafter multi-foil insulation for new build, extensions, conversion and refurbishment work, etc
- minimises thermal bridging around roof windows
- no need for a vapour barrier
- space saving element particularly lends itself to loft conversions
- durable and tear resistant yet cuts easily with scissors
- no irritant dust or fibres when cutting and installing
- Class 1 surface spread of flame (Superquilt)
- CE/CPD compliant as 'fit for purpose'

FLAT ROOF DECKBOARD

A combined roof deck and insulation board for flat roofs supported by timber joists such as JoistMate.

Creates a warm roof construction eliminating the need to insulate between the joists. Board comprises of 9mm OSB3 bonded one side to rigid PIR, faced with low emissivity aluminium foil on the reverse as a vapour check liner.

- lightweight - easy to handle - quick to lay
- OSB face suitable for a wide variety of weathering systems
- avoids the difficulty of providing ventilation through the roof void

Code	Description
84119RDO	2400 x 1200 x 119mm Roofdeck

FIXINGS FOR FLAT ROOF DECKBOARD

Code	Description
23033399	8 x 135mm Big Twist Roofdeck Fixing (pack of 50)
23060258	8 x 165mm Big Twist Roofdeck Fixing (pack of 50)
23722606	Carpenters Mate Flat Head Screws 150mm (Pk of 25)
23790698	Carpenters Mate Flat Head Screws 150mm (Pk of 80)
23791213	Carpenters Mate Flat Head Screws 175mm (Pk of 25)
23796652	Carpenters Mate Flat Head Screws 175mm (Pk of 80)
23708549	Carpenters Mate Flat Head Screws 200mm (Pk of 10)
23743656	Carpenters Mate Flat Head Screws 200mm (Pk of 200)
23713529	Carpenters Mate Flat Head Screws 200mm (Pk of 80)
23755215	Carpenters Mate Flat Head Screws 250mm (Pk of 10)
23724242	Carpenters Mate Flat Head Screws 250mm (Pk of 200)
23736467	Carpenters Mate Flat Head Screws 250mm (Pk of 80)

Code	Description
30T10	30mm Thinsulex TLX Silver 1.2 x 10m (12m ²)
21353444	30mm Thinsulex TLX Gold Multi-Foil & Breather Membrane 1.2m x 10m (12m ²)
45HCHM	45mm Hybrid 1.6m x 6.75m (10m ²)
52235HMF	35mm Actis Boost R Hybrid Insulation 1.5 x 6.7m (10.05m ²)

Unrivalled range

A massive range of timber always in stock and the largest range of timber mouldings in the South East.

Unrivalled quality

Premium quality redwood used for PAR and mouldings. Machining service available to our exacting standards.

Unrivalled service

Free delivery service (conditions apply).
Excellent customer service through investment in staff training.

With our custom profile matching service you can have precisely the profile and size you need.

Whether it's matching an existing profile or creating a custom profile design not available from Champion, we can help.

Using the latest technology in our Edenbridge Mill, all we need is either a sample of the profile to be matched, or a drawing with precise measurements so we can manufacture an exact match.

We can also tailor any of our stock profiles to suit your precise measurements.

It has never been easier to create a bespoke profile which can be co-ordinated across all your requirements including skirting, architraves, door frames, dado rail, picture rail, shelving and window boards.

We can produce your moulding, the minimum order is 1.8m, within 4 working days. Simply speak to your local Champion branch for details.

We make it easy for you to buy

To obtain an estimate or to place an order there are four easy options:

- 1 Visit** your local branch, we're ready to serve you.
- 2 Telephone** your local branch, we're ready for your call.
- 3 Email** your local branch with your request or order
- 4 Online** at: www.championtimber.com
If you are a bona fide trade account customer, register and log into our website for your trade prices, order tracking and history.
For branch details see the back page.

Unrivalled range, quality and service

Solid Hardwood Tops

Manufactured using solid hardwood blocks, finger jointed, then high frequency glued and sanded to give a uniform thickness. We offer a range of oils and finishes suitable for use where food is being prepared.

SOLID HARDWOOD - 26/27mm THICK

Code	Description
24692274	3000 x 650 x 27mm Oak A/B Grade

SOLID HARDWOOD - 40/42mm THICK

Code	Description
24661331	3000 x 650 x 40mm Oak A/B Grade
24672429	3000 x 900 x 40mm Oak A/B Grade
24680745	4000 x 650 x 40mm Oak A/B Grade

Other types available. Please ask for more details.



OAK

Solid European Oak Panel

Edge Laminated

An Oak version of the Pine panel.

- With these panels wide widths of solid Oak are now achievable - stable, economical and a lot less work
- Solid Oak throughout - cut it, carve it, shape it ... no need for edging strips

17/18mm THICK

Code	Description
24375177	1.5m x 600mm
24371995	1.8m x 600mm
24391665	1.8m x 600mm x 25mm
24358125	2.4m x 600mm

Solid Pine Panel

Edge Laminated

Manufactured using Scandinavian Redwood Pine, not the cheaper less attractive spruce. Constructed from narrow widths of kiln dried timber averaging around 12% moisture content, which is then edge-glued together achieving a very strong board, in dimensions wider than can be naturally grown.

- cut it, carve it, shape it ...no need for edging strips
- used for making furniture, built-in wardrobes, worktops, shelving, stair treads etc

IMPORTANT

To maintain stability we recommend all surfaces and all edges after cutting and shaping are sealed with either the appropriate coats of paint or 2-3 coats of good quality waterproof polyurethane or varnish. Pine Board is not suitable for exterior use. Do not allow this product to stand in a centrally heated environment without having first sealed and fixed.

17/18mm THICK

Code	Description
24348430	1.2m 300mm x 17/18mm
24364676	1.2m 400mm x 17/18mm
24352550	1.2m 500mm x 17/18mm
24327510	1.2m 600mm x 17/18mm
24321600	1.8m 300mm x 17/18mm
24324373	1.8m 400mm x 17/18mm
24375764	1.8m 500mm x 17/18mm
24327152	1.8m 600mm x 17/18mm
24332699	2.4m 300mm x 17/18mm
24384087	2.4m 400mm x 17/18mm
24335461	2.4m 500mm x 17/18mm
24338240	2.4m 600mm x 17/18mm

27/28 THICK

Code	Description
24389624	1.2m x 300mm
24366373	2.4m x 600mm

33mm THICK PINE - STRINGER BLANK

Code	Description
151133TLM	4.47m x 270mm

28mm THICK PINE STAIR TREAD - BULLNOSED

Code	Description
91128TLM	2.7m x 270mm

FREE Delivery



*Conditions apply, please ask for more details

Champion Timber Branches:

Pick up a brochure at any branch or download a brochure at: www.championtimber.com



NEW MALDEN also HEAD OFFICE



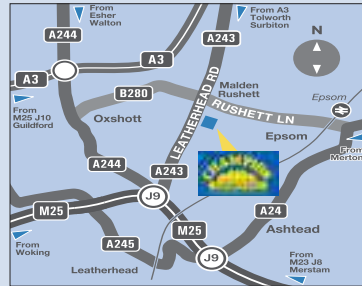
205 - 209 Burlington Road, New Malden, Surrey, KT3 4NB
Tel: 020 8949 1621
 Email: newmalden@championtimber.com
 For current opening hours see website

BROMLEY



109-123 Southlands Road, Bromley, Kent, BR2 9QX
Tel: 020 8460 6655
 Email: bromley@championtimber.com
 For current opening hours see website

CHESSINGTON



385 Leatherhead Road, Chessington, Surrey, KT9 2NQ
Tel: 01372 847910
 Email: chessington@championtimber.com
 For current opening hours see website

CLAYGATE



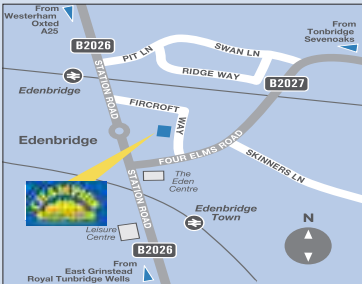
High Street, Claygate, Surrey, KT10 0JW
Tel: 01372 462407
 Email: claygate@championtimber.com
 For current opening hours see website

DORKING



Curtis Road, Dorking, Surrey, RH4 1EJ
Tel: 01306 884418
 Email: dorking@championtimber.com
 For current opening hours see website

EDENBRIDGE



Fircroft Way Industrial Estate, Edenbridge, Kent, TN8 6EL
Tel: 01732 864328
 Email: edenbridge@championtimber.com
 For current opening hours see website

GUILDFORD



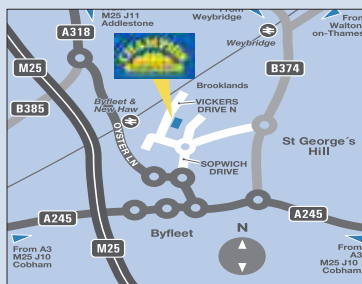
Moorfield Road, Slyfield Industrial Estate, Guildford, GU1 1RU
Tel: 01483 510170
 Email: guildford@championtimber.com
 For current opening hours see website

SUTTON



272 - 274 High Street, Sutton, Surrey, SM1 1PG
Tel: 020 8642 8291
 Email: sutton@championtimber.com
 For current opening hours see website

WEYBRIDGE



Unit A303, Brooklands Industrial Estate, Vickers Drive, Weybridge, KT13 0YU
Tel: 01932 359780
 Email: weybridge@championtimber.com
 For current opening hours see website

WIMBLEDON



2 Hartfield Crescent, entrance off Beulah Road, Wimbledon, SW19 3SB
Tel: 020 8542 1606
 Email: wimbledon@championtimber.com
 For current opening hours see website

Printed on recycled papers

